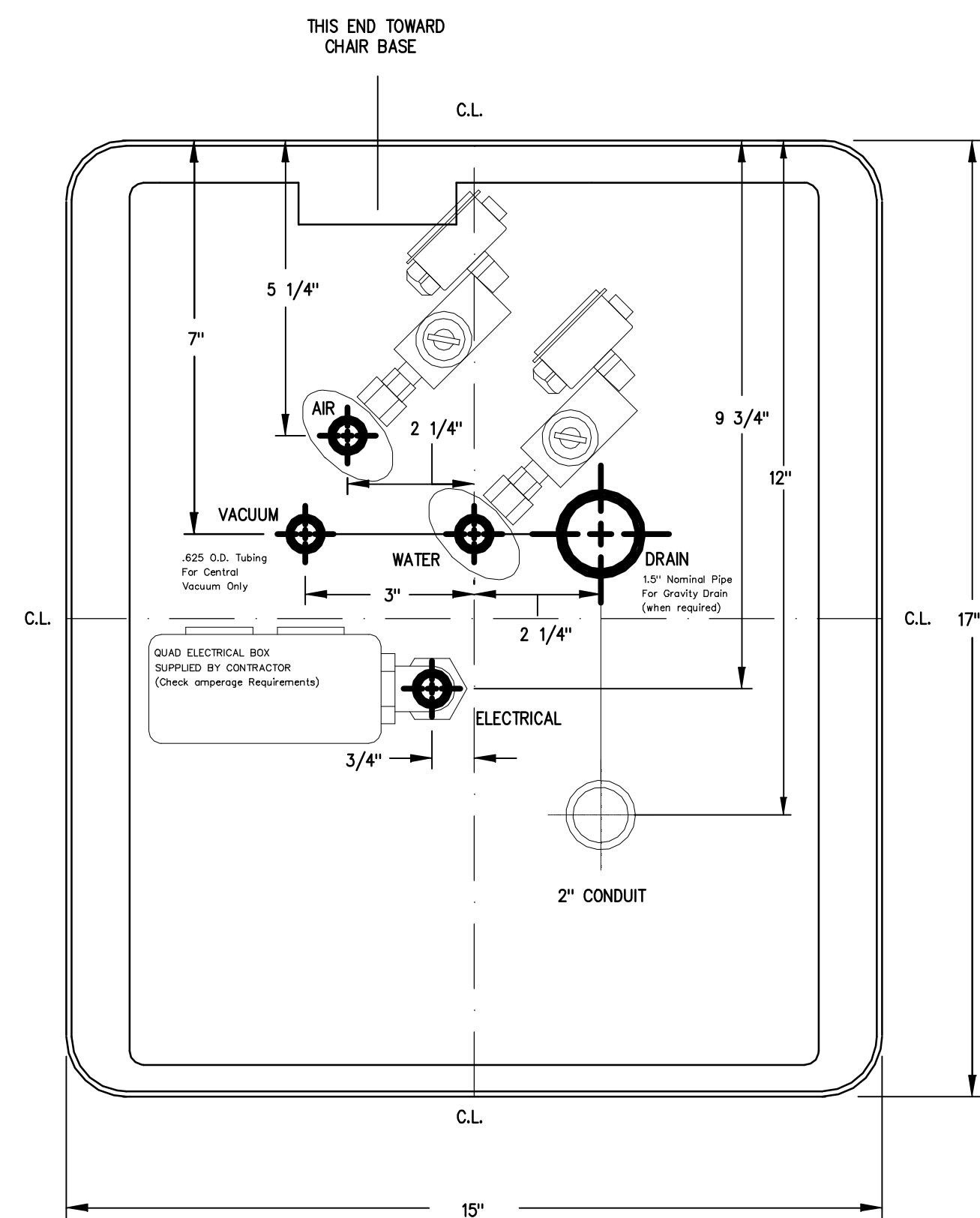
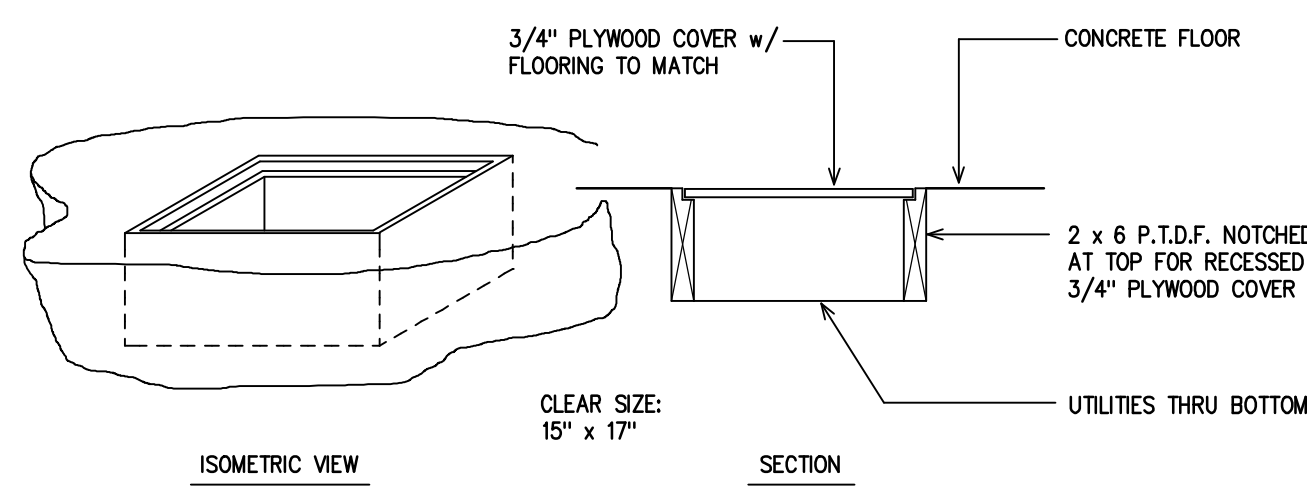


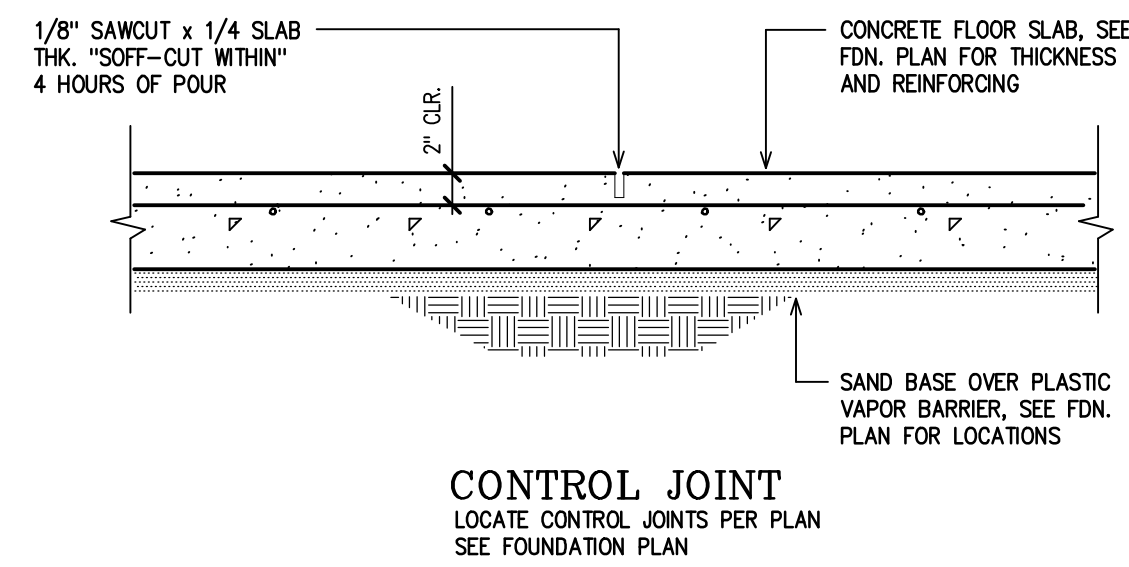
UTILITY NOTES

- AIR** - 1/2" PIPE N.P.T. COMPRESSION SUPPLY LINE STOP PROTRUDING 1" FROM FLOOR OR WALL, SUPPLIED AND INSTALLED BY CONTRACTOR. AIR PRESSURE 80-100 P.S.I. AIR PLUMBING SHOULD BE FLUSHED CLEAN BEFORE MAKING FINAL CONNECTIONS TO DENTAL EQUIPMENT.
- WATER** - 1/2" PIPE N.P.T. COMPRESSION SUPPLY LINE STOP PROTRUDING 1" FROM FLOOR OR WALL, SUPPLIED AND INSTALLED BY CONTRACTOR. WATER PRESSURE 40 - 80 P.S.I. WATER PLUMBING SHOULD BE FLUSHED CLEAN BEFORE MAKING FINAL CONNECTIONS TO DENTAL EQUIPMENT.
- ELECTRICAL** - 1/2" CONDUIT AND BOX WITH QUAD RO EQUAL RECEPTACLE SUPPLIED BY CONTRACTOR. WIRE BOX AS PER CODE. VOLTAGE 110 - 3 WIRE.
- VACUUM** - PLUMBING UP TO UTILITY CENTER SHOULD BE SPECIFIED BY CENTRAL VACUUM SUPPLIER AND TERMINATED IN UTILITY CENTER WITH 1/2" HARD COPPER PERPENDICULAR TO FLOOR, SIMILAR TO DRAIN CONNECTION.
- DRAIN** - 1-1/2" NOMINAL PIPE PROTRUDING 1" FROM FINISHED FLOOR OR WALL. NOTE: PLACE TRAP IN LINE TO CONFORM WITH LOCAL CODES. SUPPLIED BY CONTRACTOR.



UTILITY PIT AT DENTAL CHAIR

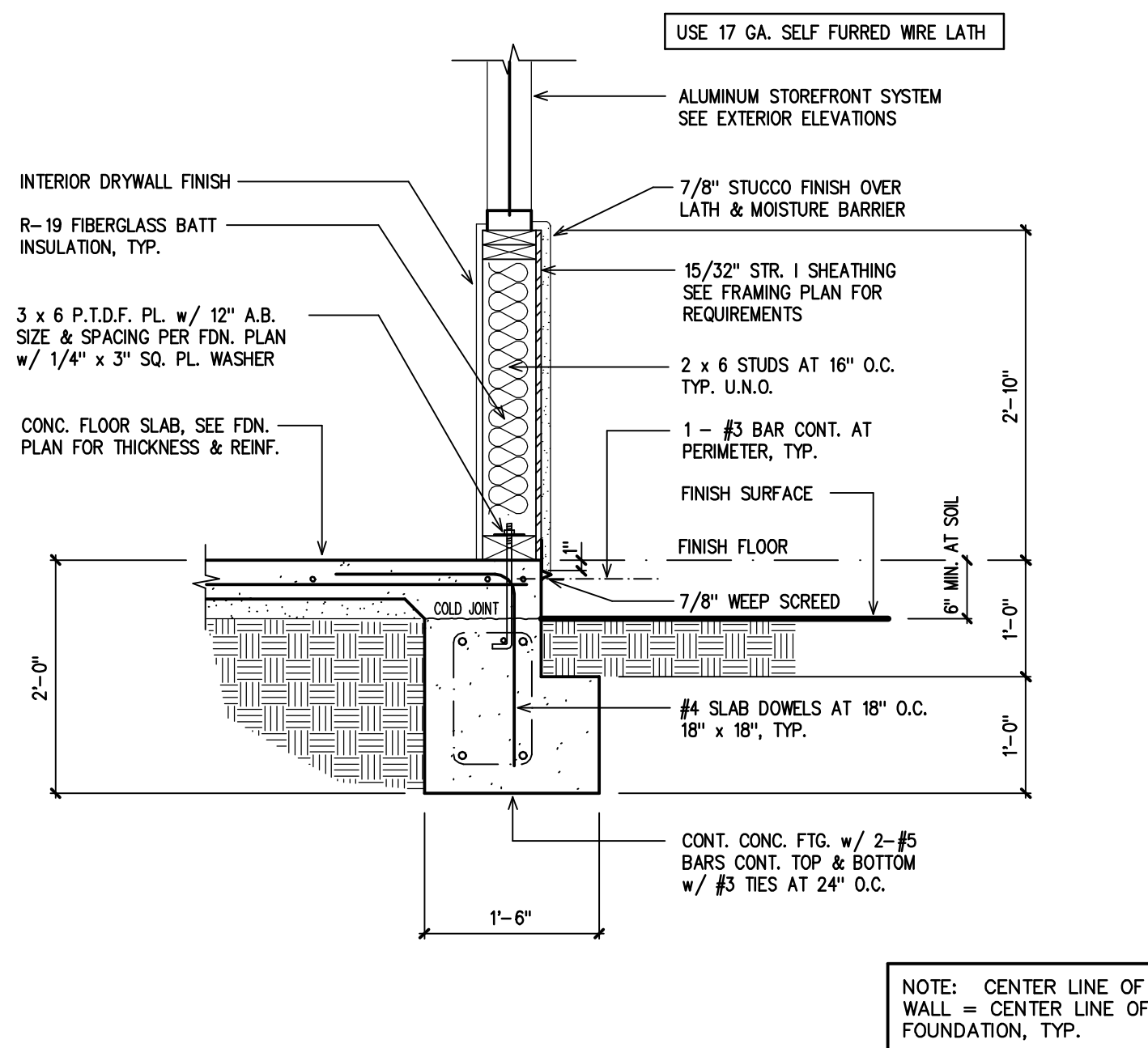
10



CONTROL JOINT  
LOCATE CONTROL JOINTS PER PLAN  
SEE FOUNDATION PLAN

CONCRETE SLAB JOINTS

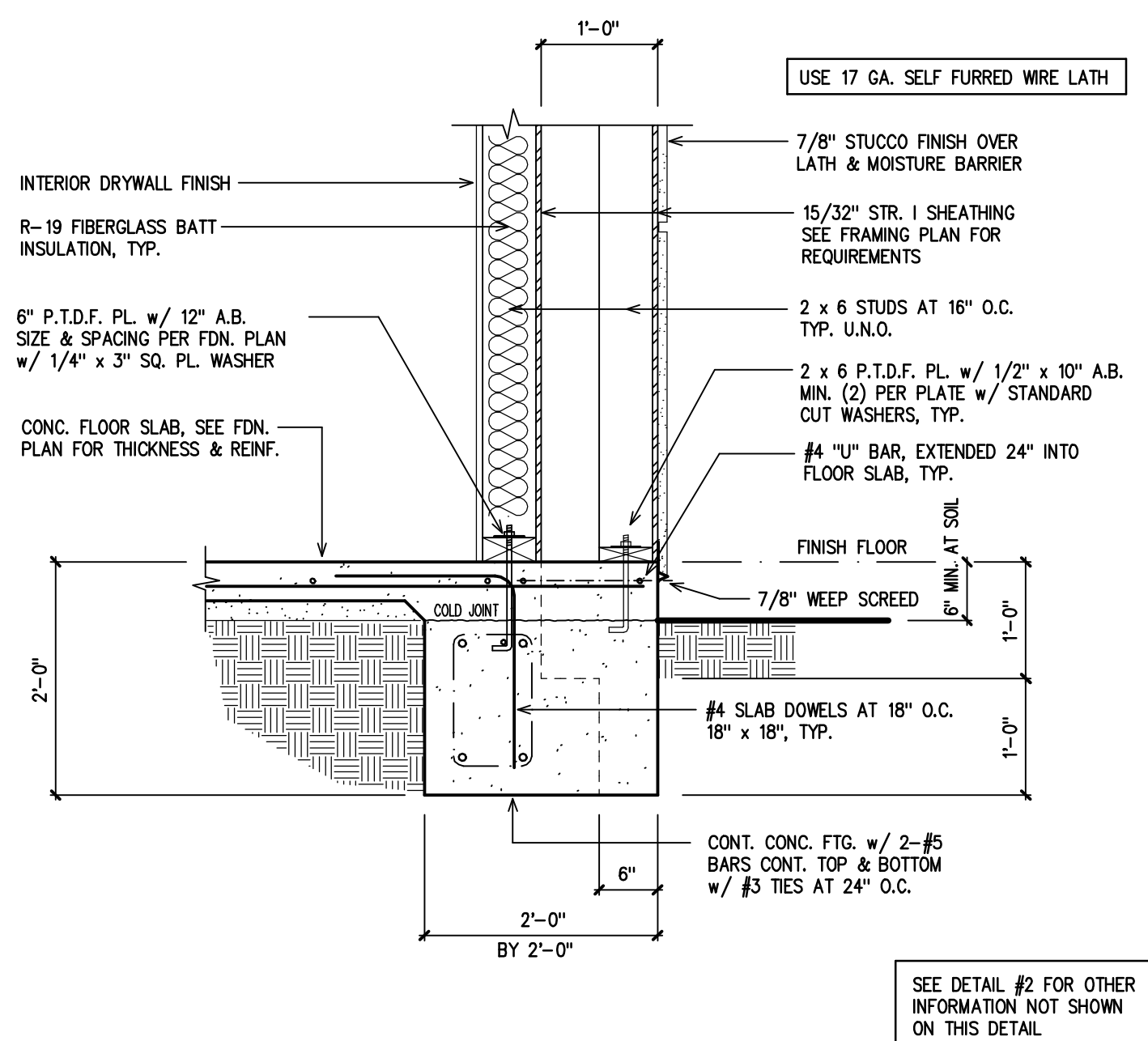
7



NOTE: CENTER LINE OF WALL = CENTER LINE OF FOUNDATION, TYP.

CONT. FTG. BELOW WINDOWS

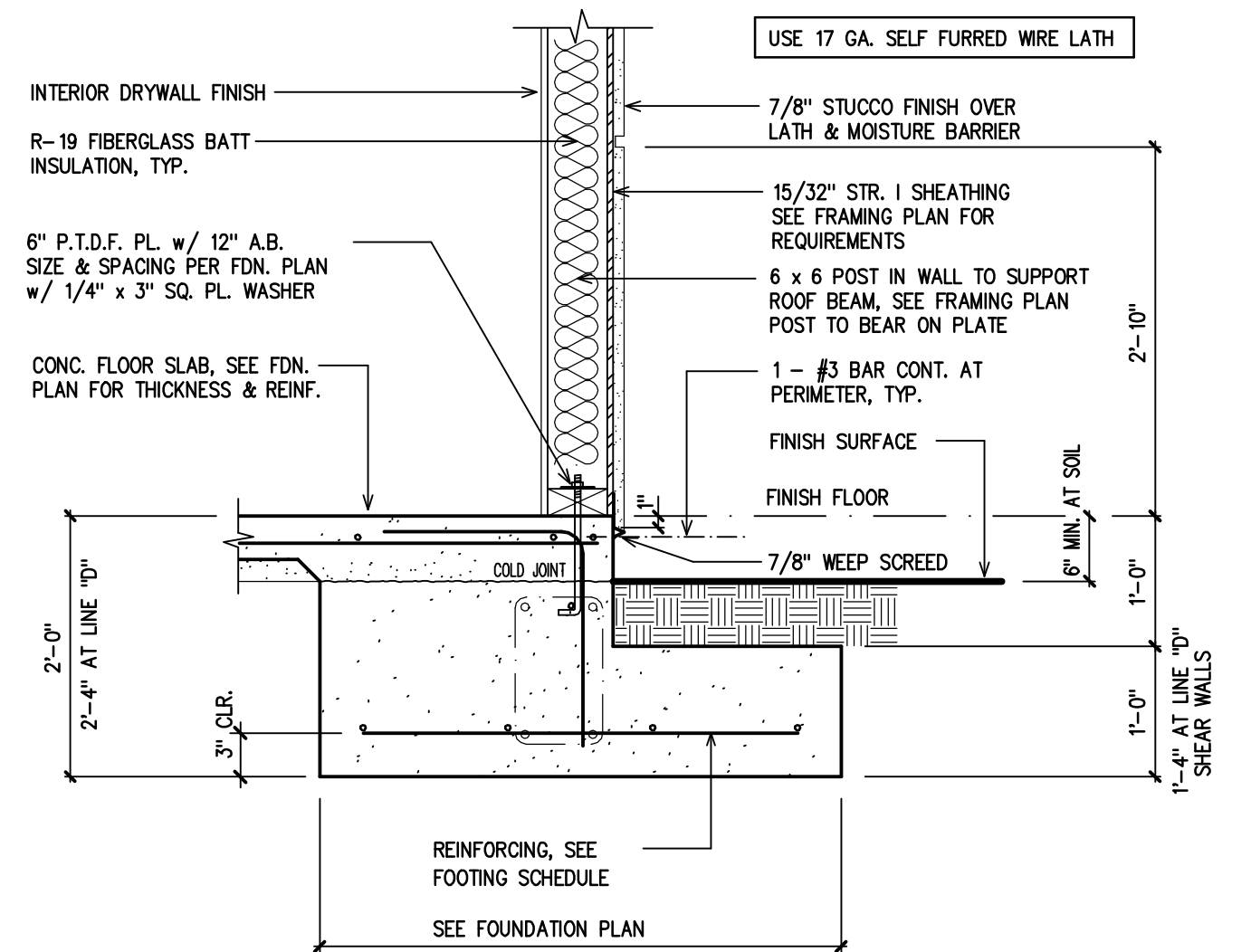
8



SEE DETAIL #2 FOR OTHER INFORMATION NOT SHOWN ON THIS DETAIL

FOOTING AT POP-OUT

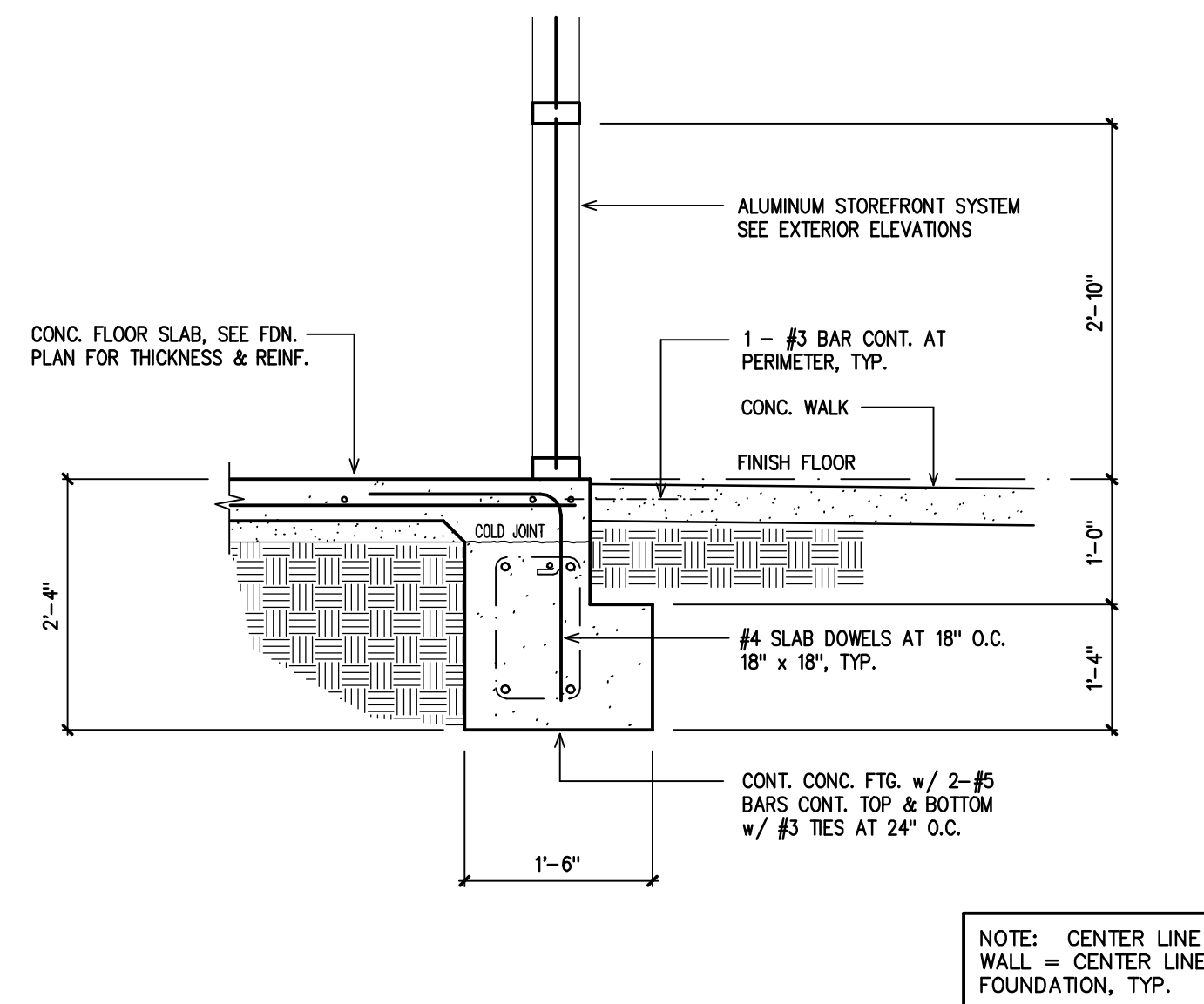
9



NOTE: CENTER LINE OF WALL = CENTER LINE OF FOUNDATION, TYP.

PAD FTG. AT EXTERIOR WALL

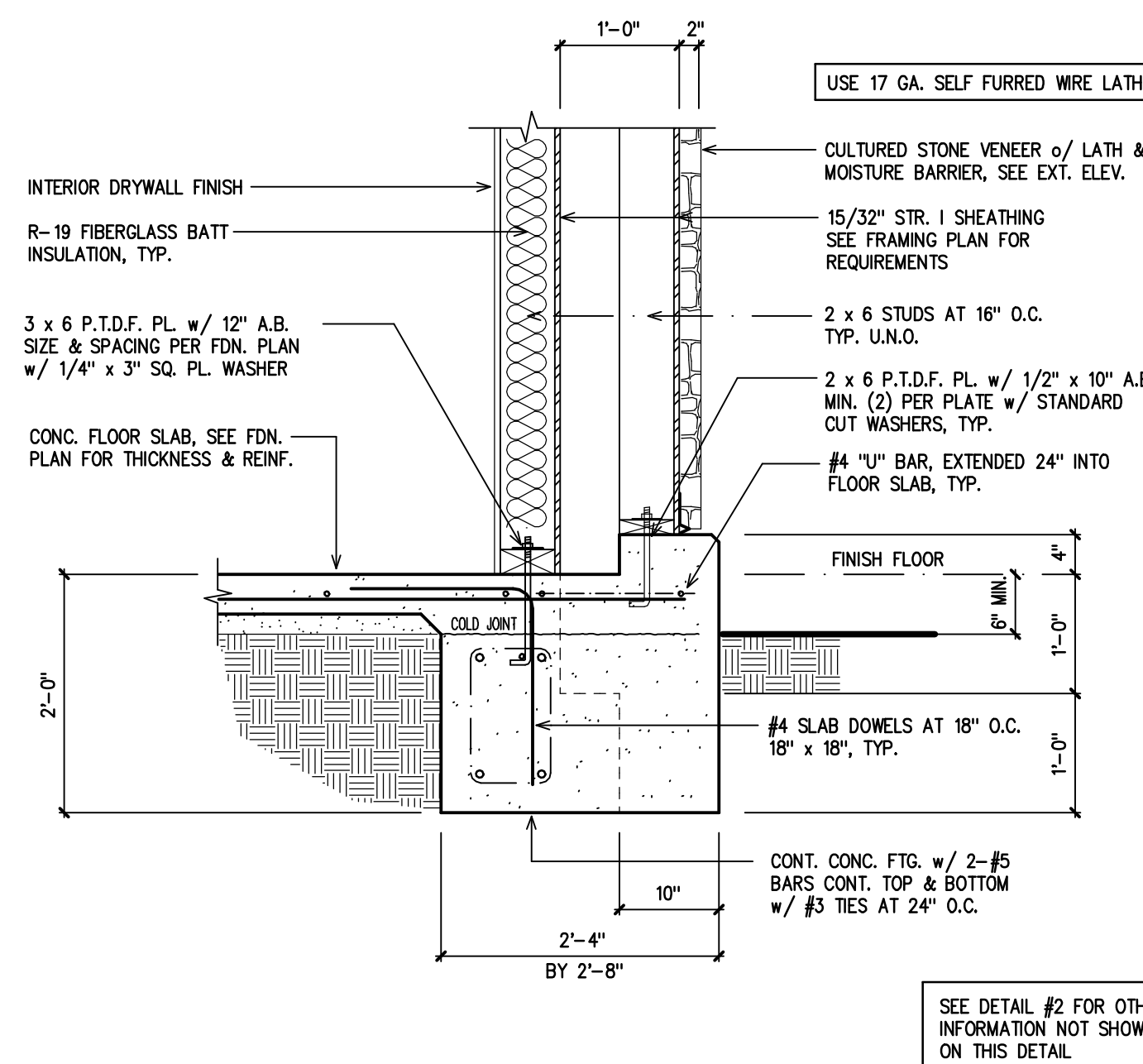
4



NOTE: CENTER LINE OF WALL = CENTER LINE OF FOUNDATION, TYP.

CONT. FTG. AT STOREFRONT

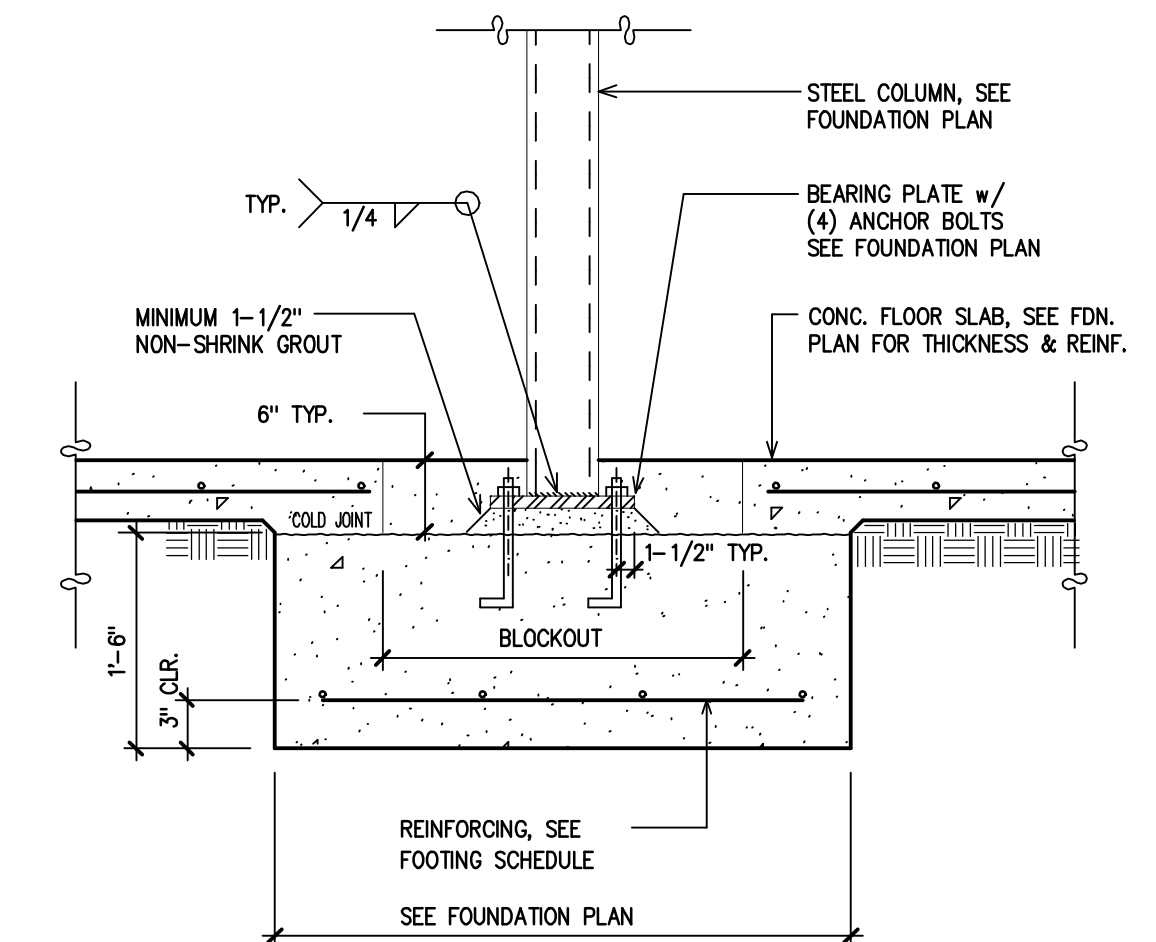
5



SEE DETAIL #2 FOR OTHER INFORMATION NOT SHOWN ON THIS DETAIL

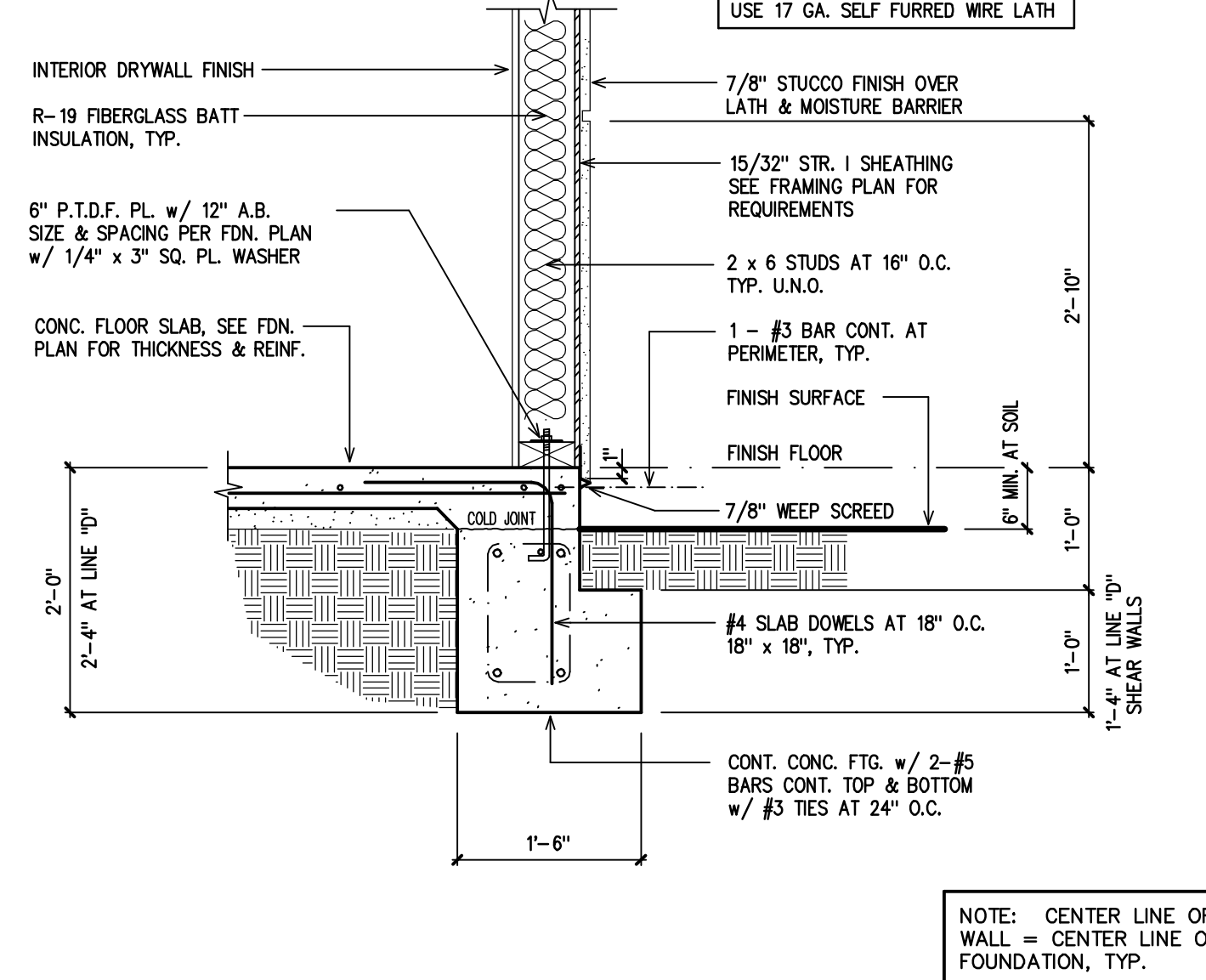
FOOTING AT POP-OUT

6



STEEL COLUMN TO PAD FOOTING

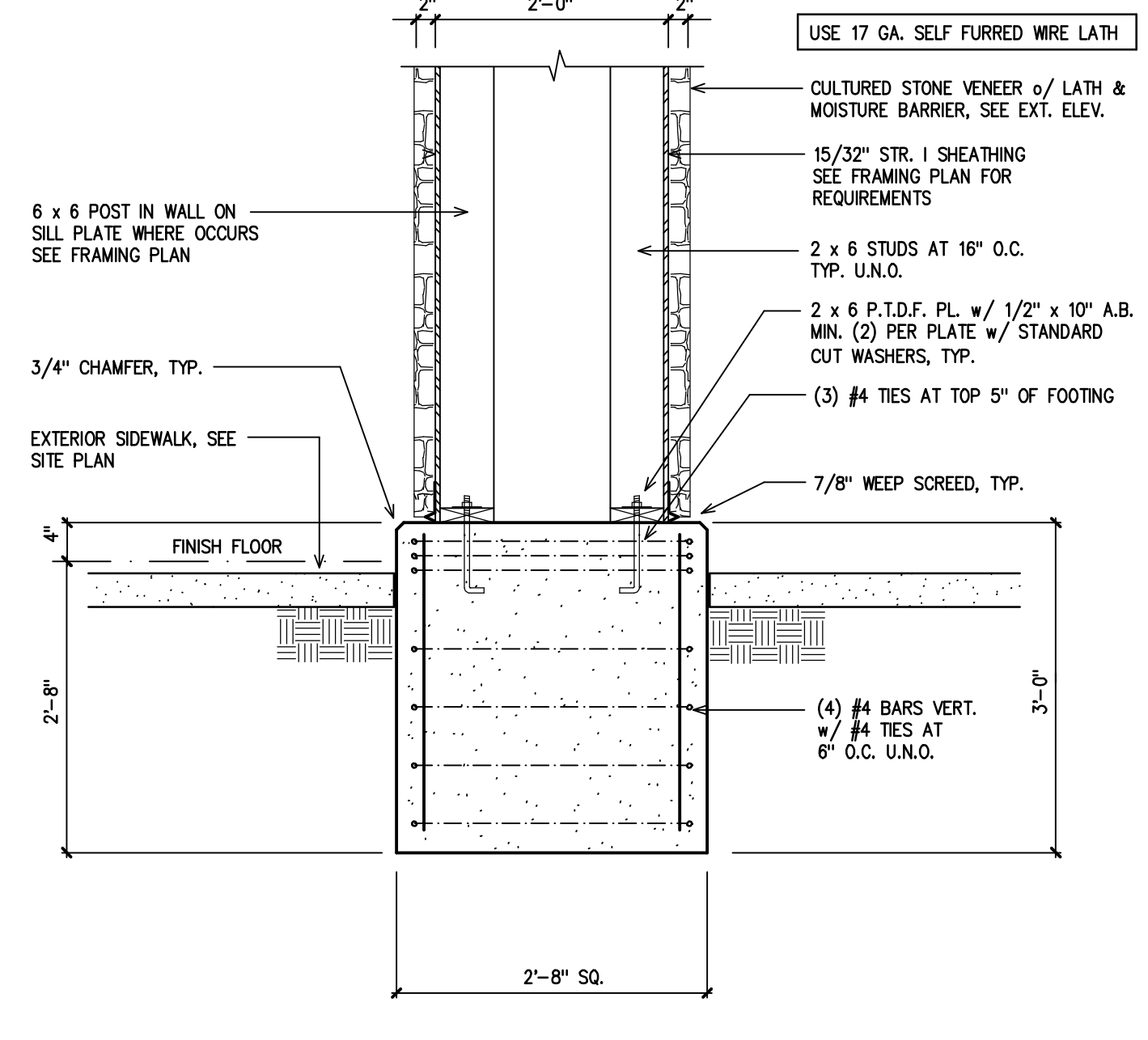
1



NOTE: CENTER LINE OF WALL = CENTER LINE OF FOUNDATION, TYP.

CONT. FTG. AT SHEAR WALL

2

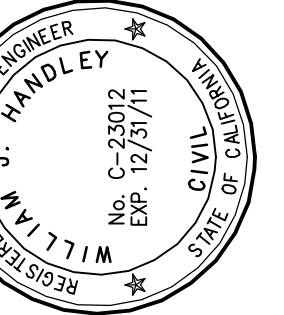


PAD FTG. AT FRONT COLUMN

3

NO.	REVISION	BY	DATE

**HANDLEY ENGINEERING**  
130 EL CAMINO REAL TUSTIN CA 92780  
SUITE 200 (714) 669-1141



NEW PROFESSIONAL OFFICE FOR:  
**JAMES HOCH, D.D.S.**  
32246 CLINTON KEITH ROAD, WILDOMAR, CA 92595

DATE:	11/28/11
JOB NO:	11-23
DRAWN:	WJH
CHECKED:	WJH
SCALE:	NONE
SHEET	

S-4.1  
OF SHEETS