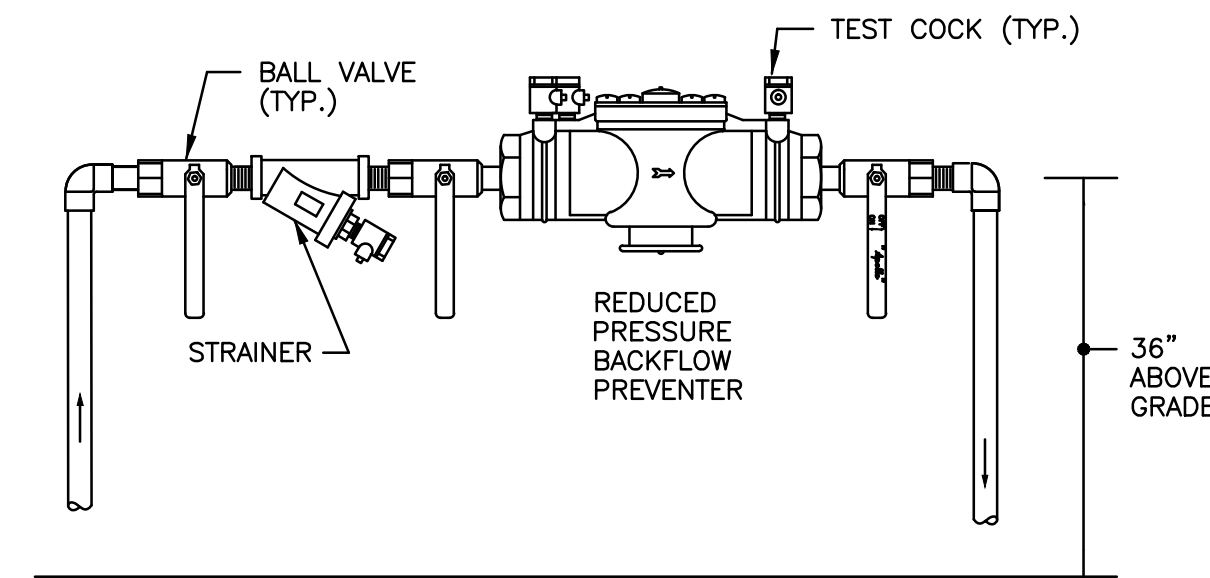
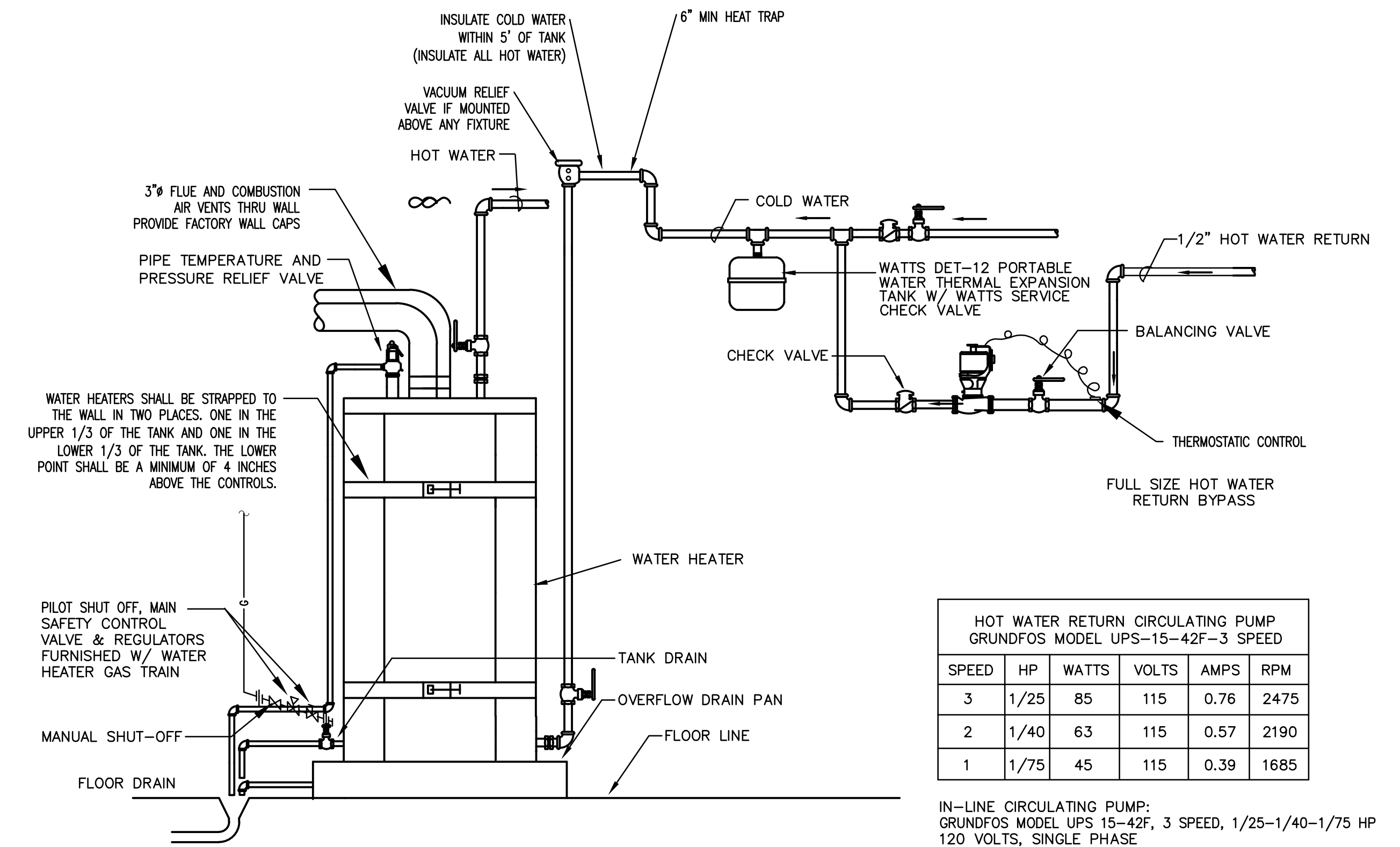


**6 LAVATORY PIPING DETAIL**  
SCALE: NOT TO SCALE



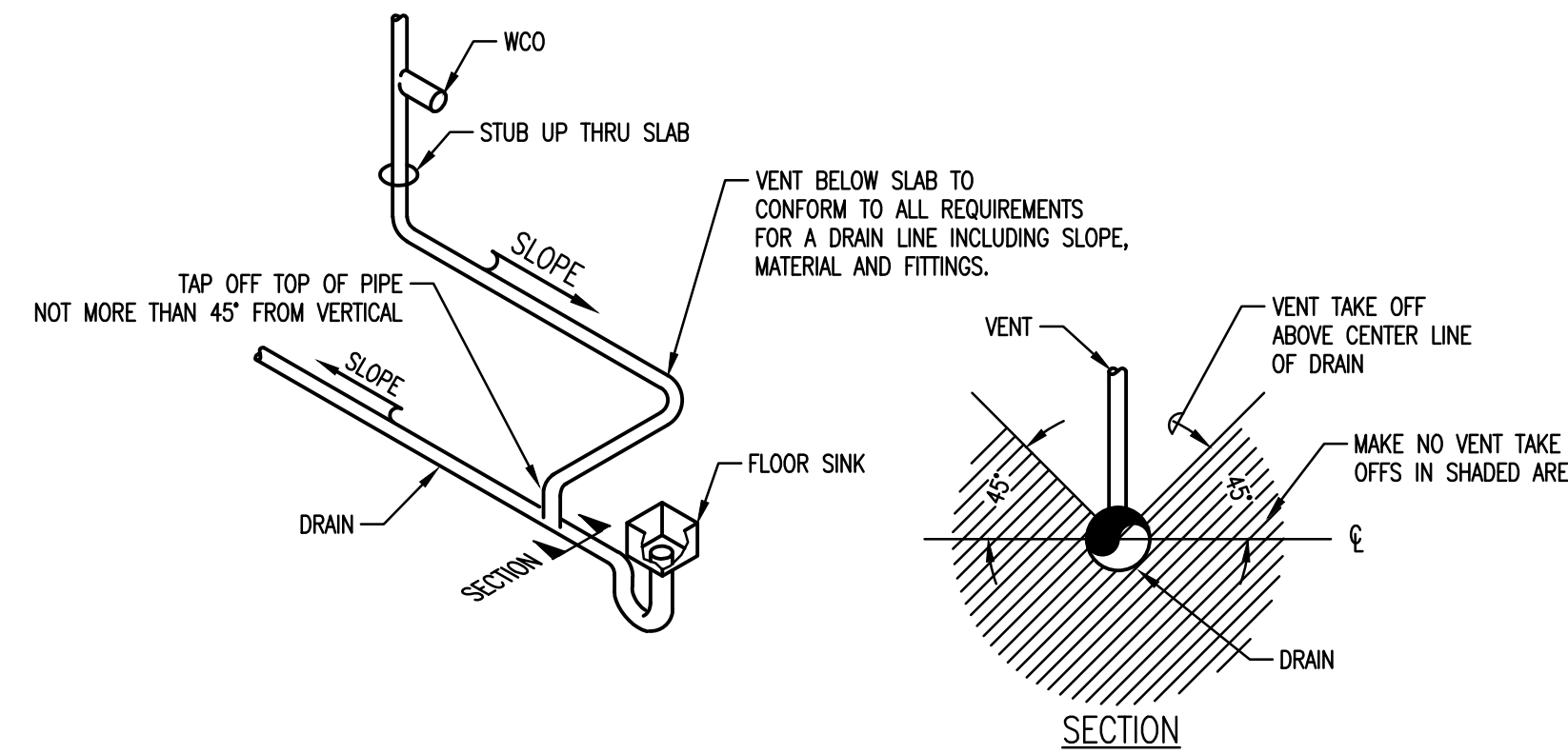
**3 BACKFLOW DEVICE**  
SCALE: NOT TO SCALE



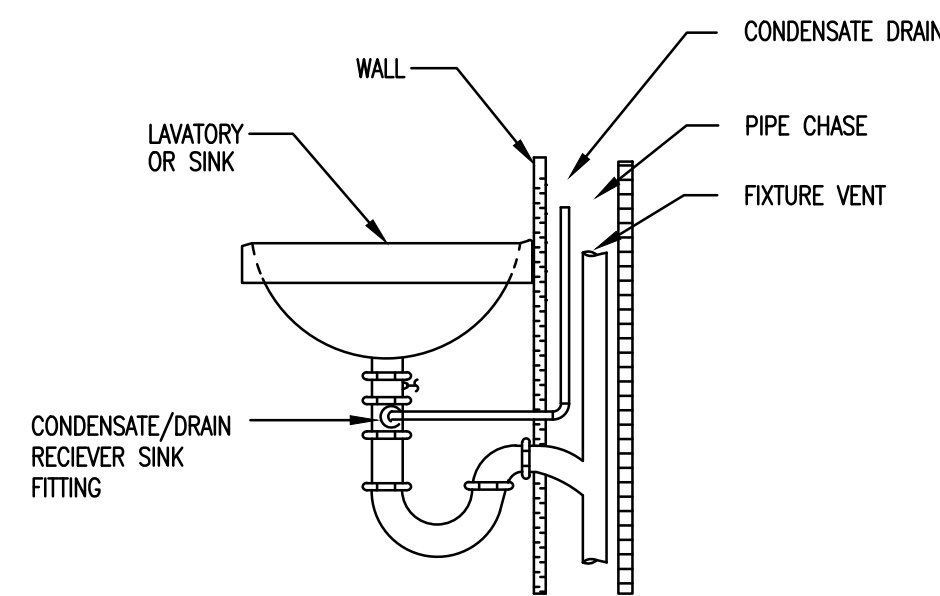
**1 SUITE A WATER HEATER DETAIL**  
SCALE: NOT TO SCALE

HOT WATER RETURN CIRCULATING PUMP GRUNDFOS MODEL UPS-15-42F-3 SPEED					
SPEED	HP	WATTS	VOLTS	AMPS	RPM
3	1/25	85	115	0.76	2475
2	1/40	63	115	0.57	2190
1	1/75	45	115	0.39	1685

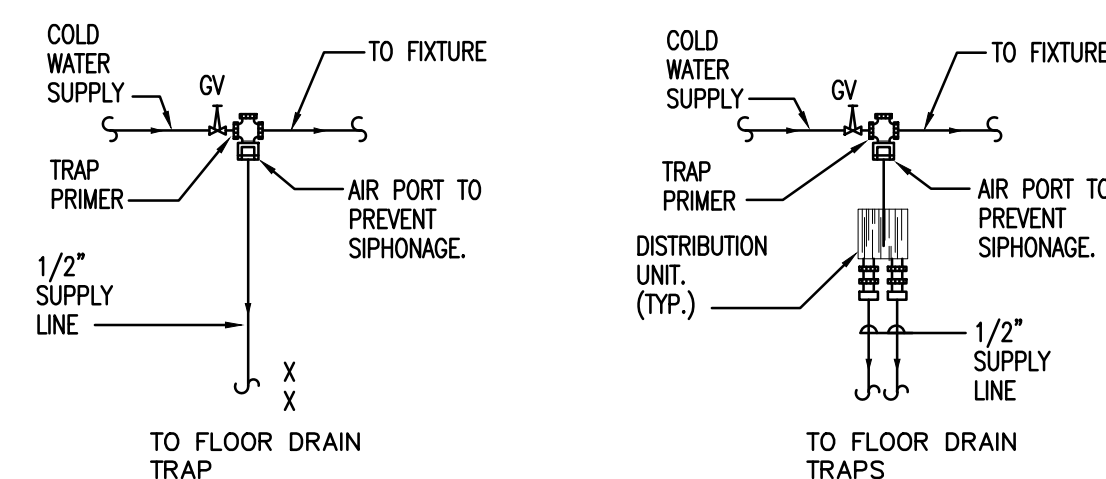
IN-LINE CIRCULATING PUMP:  
GRUNDFOS MODEL UPS 15-42F, 3 SPEED, 1/25-1/40-1/75 HP  
120 VOLTS, SINGLE PHASE



**4 FLOOR SINK DETAIL W/ HORIZONTAL VENT BELOW SLAB**  
SCALE: NOT TO SCALE

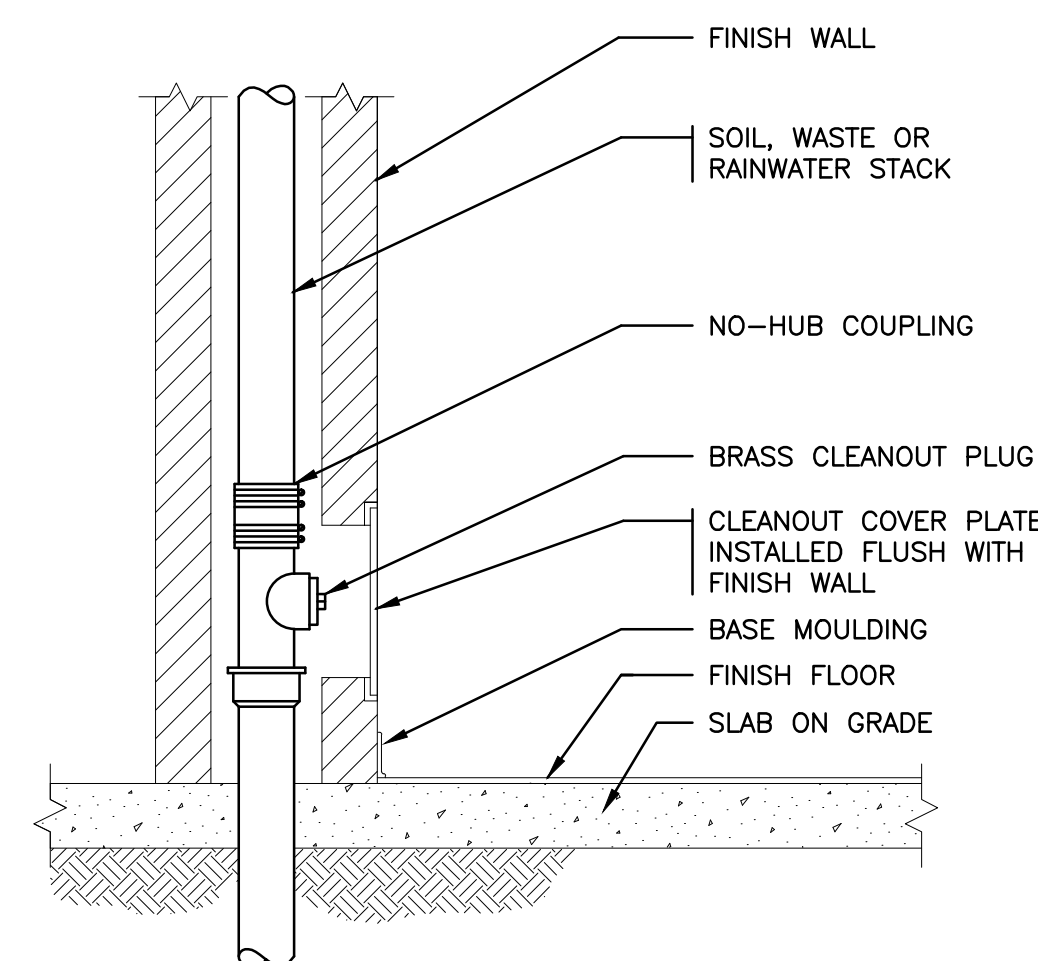


**7 LAV TAILPIECE DRAIN**  
SCALE: NOT TO SCALE

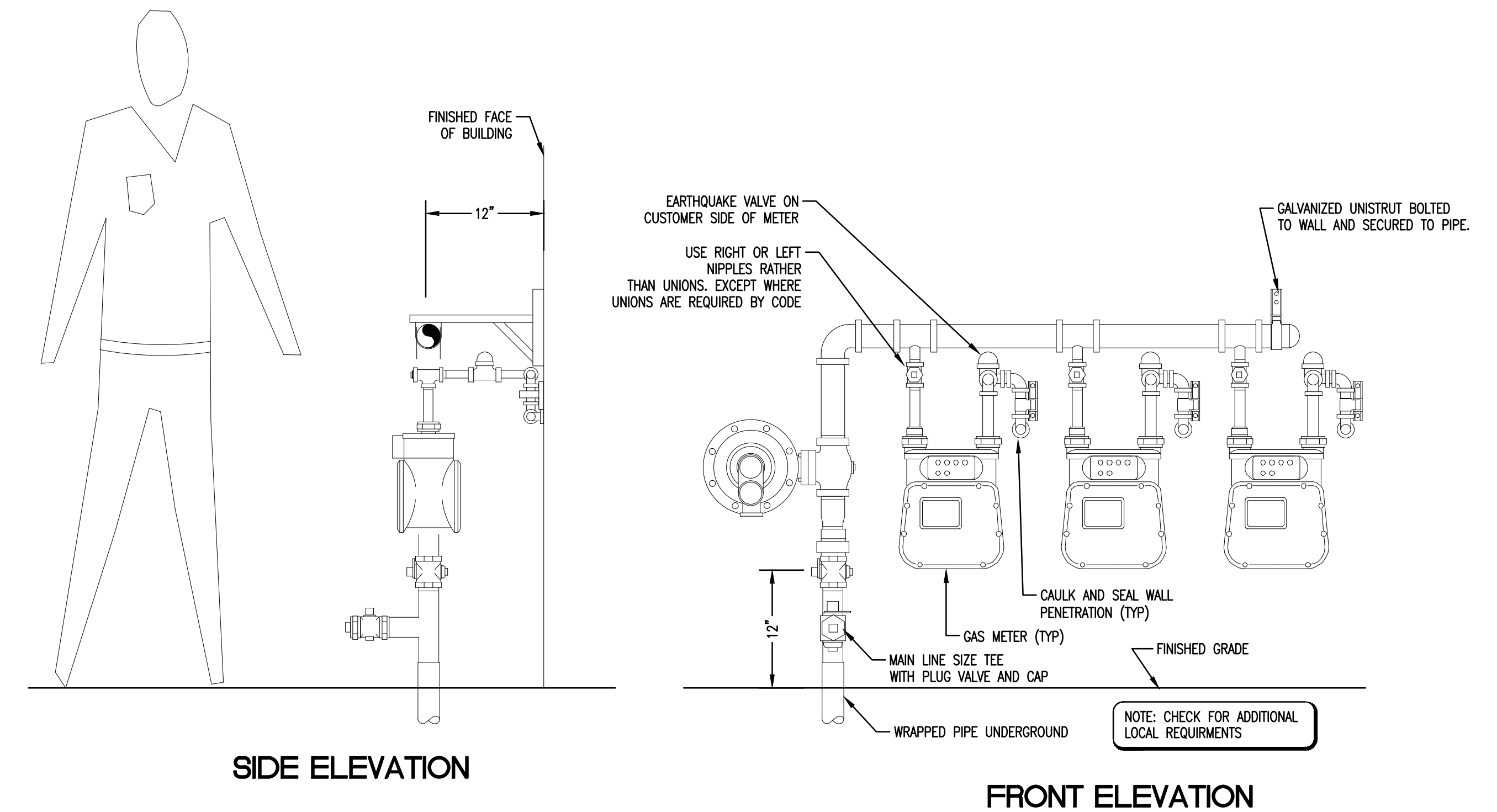


NOTE:  
DISTRIBUTION UNITS MAY BE USED FOR TWO (2) THRU EIGHT (8) TRAPS AS REQUIRED PER JOB.  
TWO (2)-DISTRIBUTION UNITS MAXIMUM PER STANDARD TRAP PRIMER.  
ALL FLOOR DRAINS TO HAVE TRAP PRIMER, NOT SHOWN ON RISERS OR PLANS. PROVIDE TRAP AND COLD WATER LINE FROM NEAREST PLUMBING FIXTURE TO FLOOR DRAIN.

**8 TRAP PRIMER DETAILS**  
SCALE: NOT TO SCALE



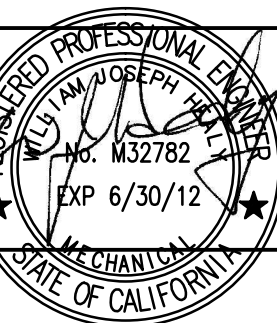
**5 FLUSH WALL CLEANOUT**  
SCALE: NOT TO SCALE



**2 GAS METER W/ EARTHQUAKE VALVE**  
SCALE: NOT TO SCALE

NO.	REVISION	BY	DATE

**HANDLEY ENGINEERING**  
130 EL CAMINO REAL, SUITE 200  
TUSTIN, CA 92780  
(714) 669-1141



**SOUTH LAND energy consultants**  
11110 24th St., Suite 100, San Diego, CA 92121  
Phone: 949-497-3591  
Fax: 949-497-3591  
Email: jhoch@southland.com

NEW PROFESSIONAL OFFICE FOR:  
**JAMES HOCH, D.D.S.**  
32246 CLINTON KEITH ROAD, WILDOMAR, CA 92595

DATE: 12.06.11  
JOB NO: H11-135  
DRAWN: JH  
CHECKED: JH  
SCALE: AS NOTED  
SHEET

**P6.0**  
OF SHEETS