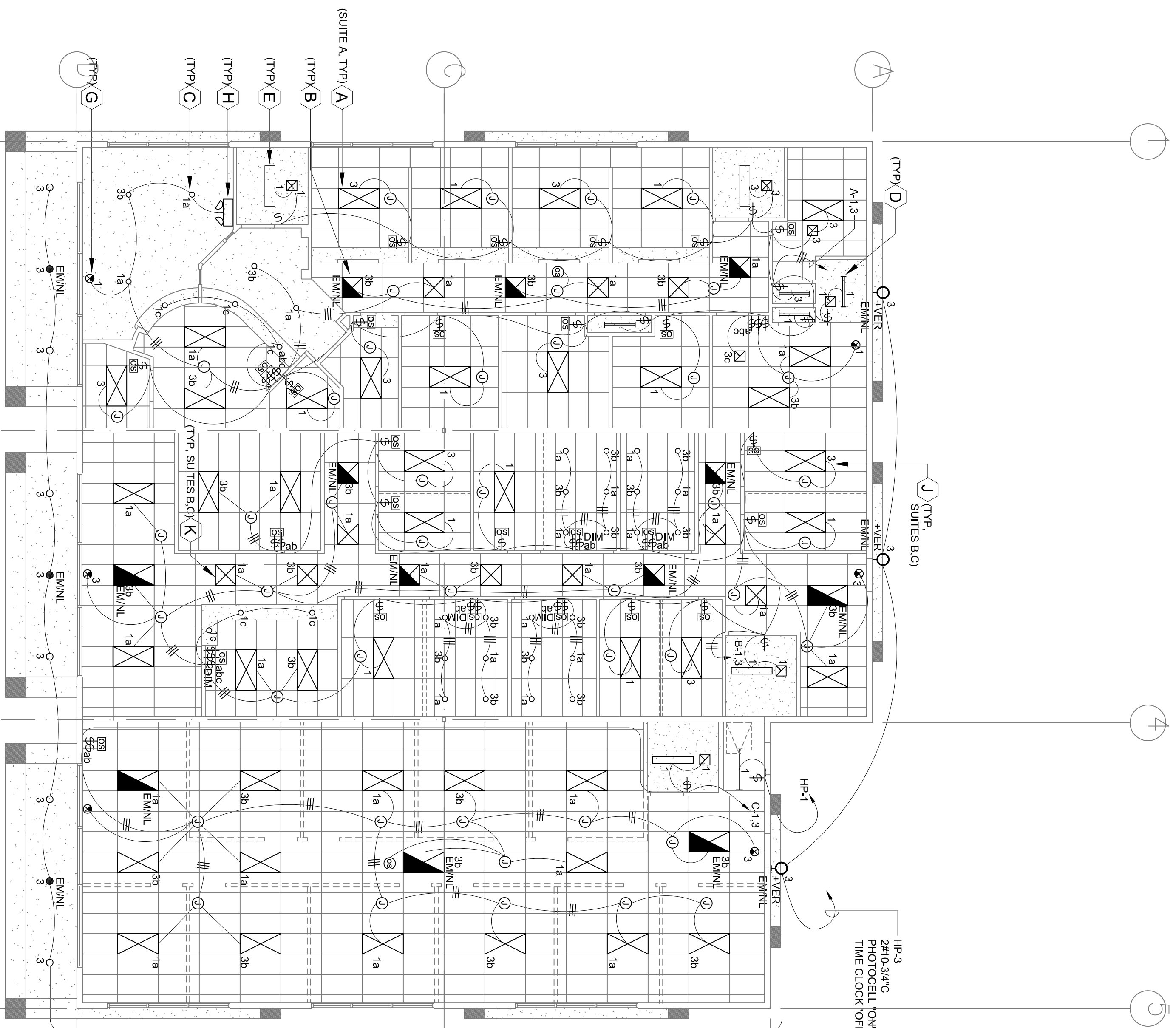


NOTE: REDUNDANT GROUND REQUIRED IN PATIENT CARE AREAS:
 IN AN AREA USED FOR PATIENT CARE, THE GROUNDING TERMINALS OF ALL RECEPTACLES AND ALL NON-CURRENT CARRYING CONDUCTIVE SURFACES OF FIXED ELECTRIC EQUIPMENT LIKELY TO BECOME ENERGIZED THAT ARE SUBJECT TO PERSONAL CONTACT OPERATING AT OVER 100 VOLTS, SHALL BE GROUNDED BY AN INSULATED COPPER CONDUCTOR. THE GROUNDING CONDUCTOR SHALL BE INSTALLED IN METAL RACEWAYS OR METAL-CLAD CABLES WITH BRANCH-CIRCUIT CONDUCTORS SUPPLYING THESE RECEPTACLES OR FIXED EQUIPMENT. PER SECTION 517.13 (A)(B).

- POWER PLAN NOTES:
- 1 CEILING MOUNT TV RECEPT /CABLE BOX VERIFY LOCATION.
 - 2 PHOTOCELL "ON" TIMECLOCK "OFF"
 - 3 QUAD RECEPT UNDER CHAIR. SEE EDDS PLAN ET FPR ADDITIONAL REQUIREMENTS.
 - 4 SEE EDDS PLAN E-1 FOR ADDITIONAL REQUIREMENTS. VERIFY ALL REQUIREMENTS PRIOR TO ROUGH-IN.
 - 5 XRAY: DENTAL VERIFY AND FOLLOW MANUFACTURERS INSTALLATION REQUIREMENTS. SEE EDDS E-1 FOR ADDITIONAL INFORMATION AND CONDUIT REQUIREMENTS.
 - 6 XRAY: CHIROPRACTOR VERIFY AND FOLLOW MANUFACTURERS INSTALLATION REQUIREMENTS.
 - 7 AQUA: VERIFY REQUIREMENTS.



- LIGHTING PLAN NOTES:
- 1 CEILING MOUNTED OCCUPANCY SENSOR.
 - 2 COMBO WALL MOUNTED OCCUPANCY SENSOR AND SWITCH. BOTH USED AS WHOLE BUILDING LTG SHUT-OFF SYSTEM.

POWER PLAN

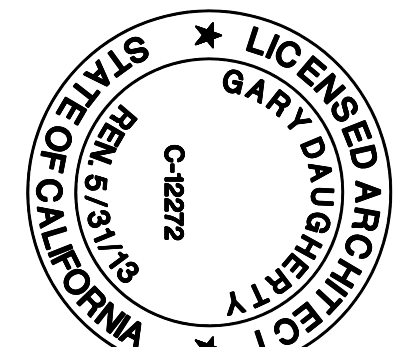
SCALE: 1/8" = 1'-0"
 2

LIGHTING PLAN

SCALE: 1/8" = 1'-0"
 1

NO.	REVISION	BY	DATE

HANDLEY ENGINEERING
 130 EL CAMINO REAL TUSTIN CA 92780
 SUITE 200 (714) 669-1141



SOUTHLAND
 energy consultants
 title 24 calculations
 hvac, plumbing and electrical design
 1491 Gleneyre St., Laguna Beach, CA 92651
 PH: 949/497-3591 FAX: 949/497-3210
 E-mail Address: peklsland@aol.com

NEW PROFESSIONAL OFFICE FOR:
JAMES HOCH, D.D.S.
 32246 CLINTON KEITH ROAD, WILDOMAR, CA 92595

DATE: 11.28.11
 JOB NO: TMS/SL/H
 DRAWN: PK
 CHECKED: GD/PK
 SCALE: AS NOTED
 SHEET
E2.0
 OF SHEETS