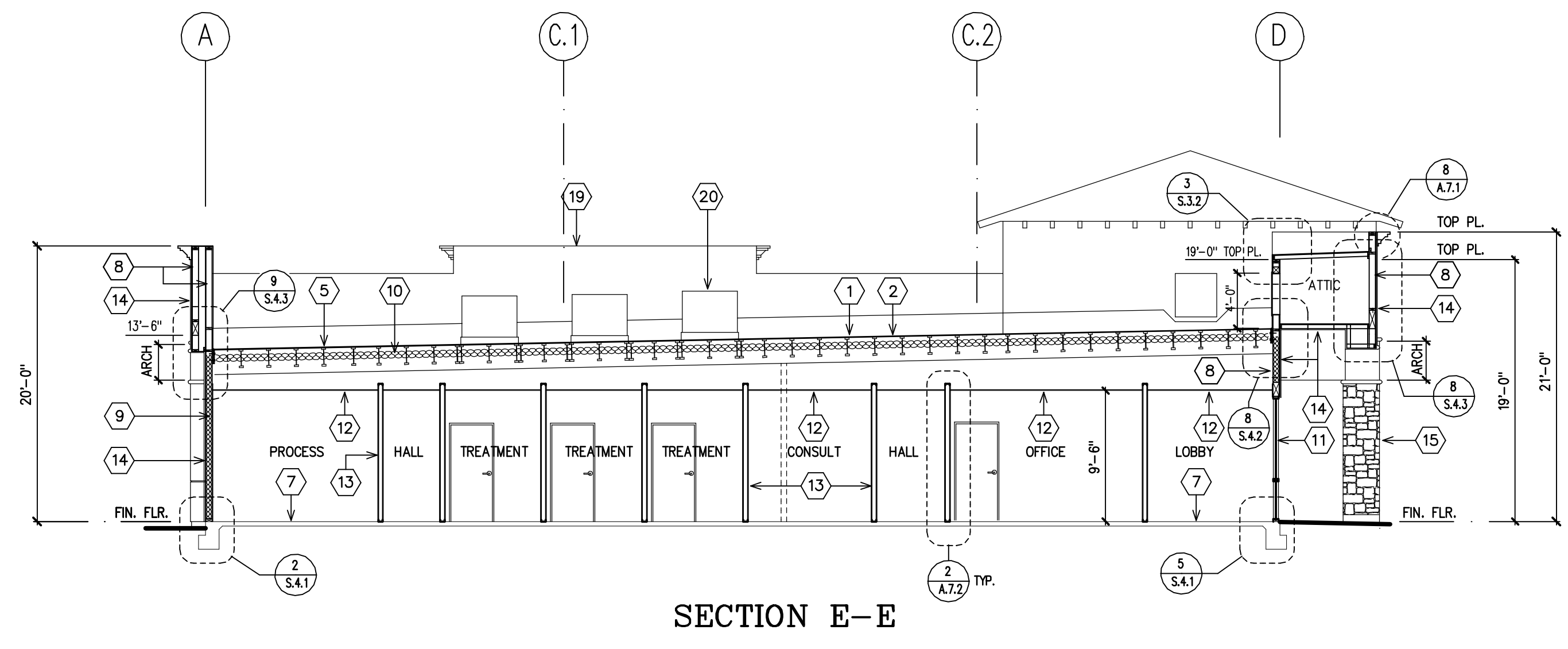


SECTION D-D



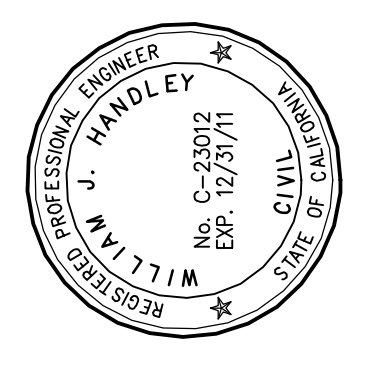
SECTION E-E

- CROSS SECTION NOTES
- 1 CLASS "A" BUILT-UP ROOFING, SEE SPECS.
 - 2 15/32" STR. 1 ROOF SHEATHING, SEE FRAMING PLAN
 - 3 TILE ROOFING, SEE EXTERIOR ELEVATIONS
 - 4 4 x 6 RAFTERS AT 24" O.C., SEE FRAMING PLAN
 - 5 1" JOIST RAFTERS, SEE FRAMING PLAN
 - 6 GLU-LAM BEAM, SEE FRAMING PLAN
 - 7 CONCRETE FLOOR SLAB, SEE FOUNDATION PLAN
 - 8 2 x 6 WOOD STUDS AT 16" O.C. U.N.O.
 - 9 R-13 INSULATION AT INTERIOR WALLS AS SHOWN
R-19 INSULATION AT EXTERIOR WALLS AS SHOWN
 - 10 R-30 FIBERGLASS INSULATION AT THE ROOF, AS SHOWN
 - 11 STOREFRONT GLAZING, SEE EXTERIOR ELEVATIONS
 - 12 SUSPENDED T-BAR CEILING, SEE REFLECTED CEILING PLAN
 - 13 5/8" TYPE "X" DRYWALL, TYP. U.N.O.
 - 14 7/8" STUCCO OVER LATH & MOISTURE BARRIER
 - 15 CULTURED STONE VENEER OVER LATH & MOISTURE BARRIER
 - 16 6" METAL STUD PARTITION, SEE FLOOR PLAN
 - 17 3 5/8" METAL STUD PARTITION, SEE FLOOR PLAN
 - 18 DRYWALL SOFFIT, SEE REFLECTED CEILING PLAN
 - 19 LINE OF PARAPET BEYOND, SEE EXTERIOR ELEVATIONS
 - 20 ROOF TOP HVAC UNITS, SEE ROOF PLAN & MECHANICAL PLANS
 - 21 1/2" D.W. CEILING o/ 3 5/8" STEEL CLG. JOISTS AT 16" O.C.
 - 22 26 GA. STEEL STUD "HANGERS" AT 4'-0" O.C. EVERY 6'-0"
 - 23 26 GA. STEEL STUD "PURLINS" AT 6'-0" O.C.

NO.	REVISION	BY	DATE

HANDLEY ENGINEERING

130 EL CAMINO REAL TUSTIN, CA 92780
SUITE 200 (714) 669-1141



NEW PROFESSIONAL OFFICE FOR:
JAMES HOCH, D.D.S.
32246 CLINTON KEITH ROAD, WILDOMAR, CA 92595

DATE:	11/28/11
JOB NO:	11-23
DRAWN:	WJH
CHECKED:	WJH
SCALE:	1/8"=1'-0"
SHEET	
A-5.2	
OF	SHEETS