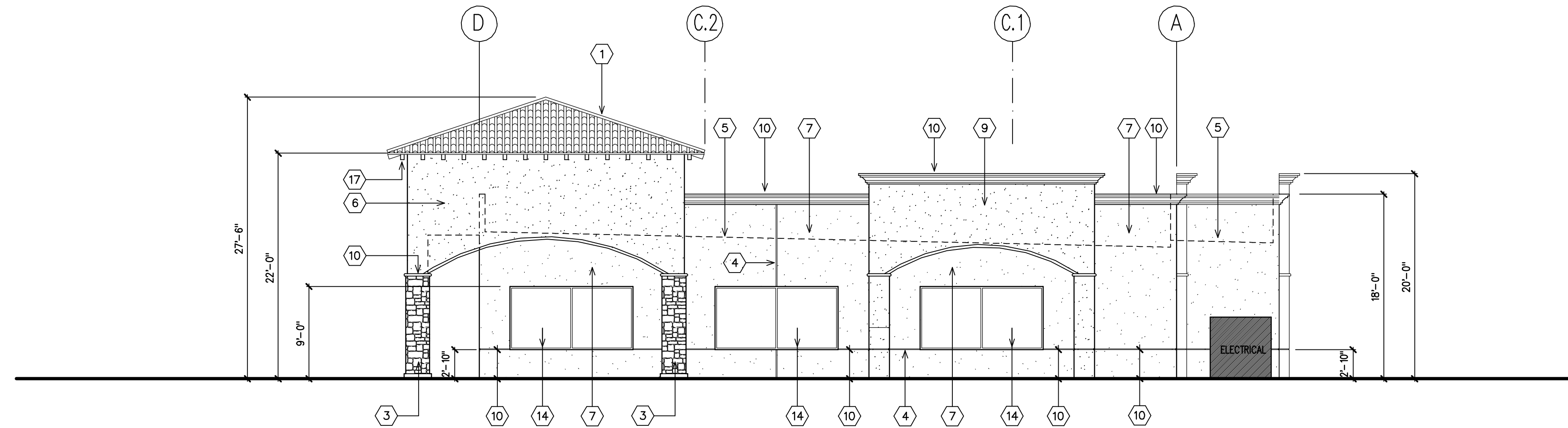
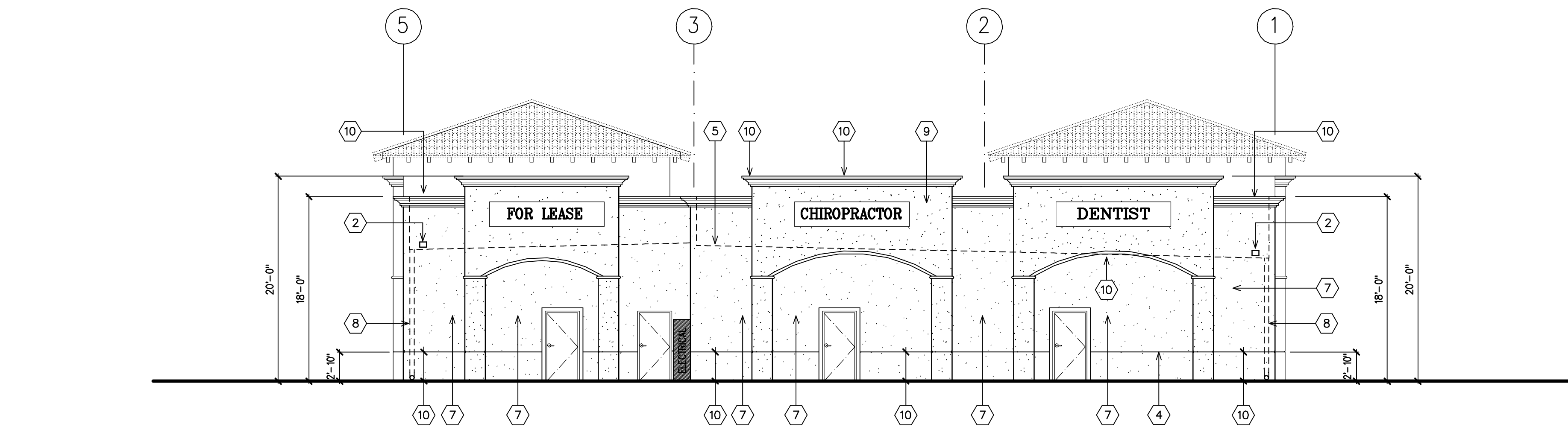


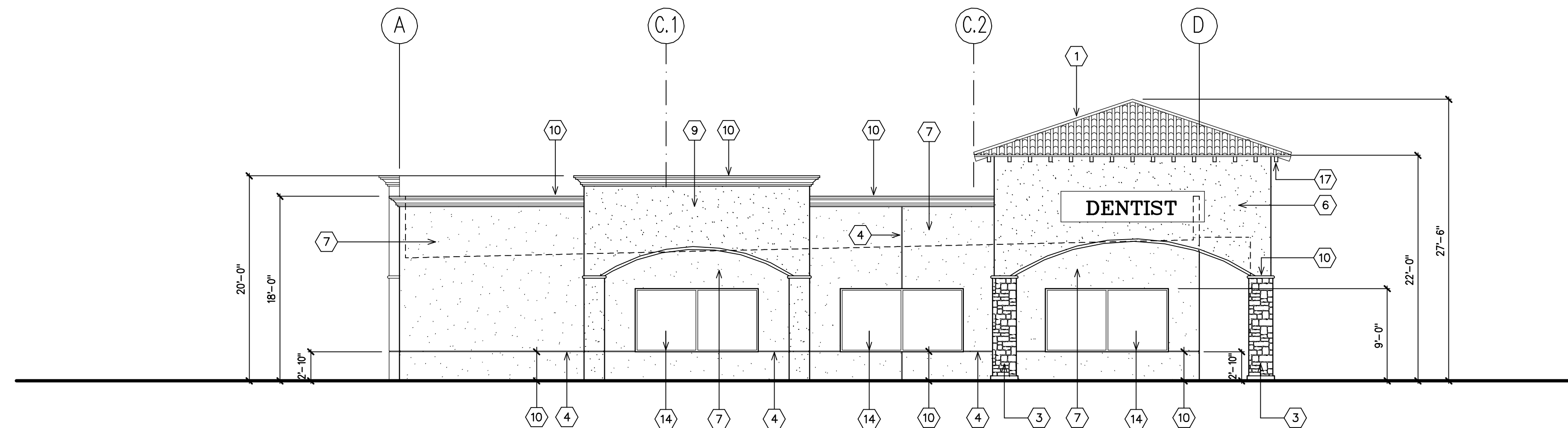
SOUTH ELEVATION



WEST ELEVATION



NORTH ELEVATION



EAST ELEVATION

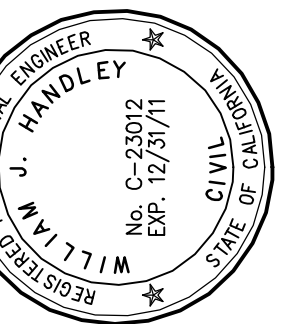
ELEVATION NOTES

- ① ROOF - 2 PIECES MISSON & TURRET TILE
30% NATURAL RED, F-40; 30% BRICK RED, 2F43;
40% CINNAMON, 2F18
- ② OVERFLOW SCUPPER; 8" WIDE x 6" HIGH, SEE DETAIL 1/A-7.1
- ③ STONE VENEER - WISCONSIN WEATHER EDGE LEDGESTONE
CSV-2091 BY OWENS CORNING CULTURED STONE
- ④ 3/4" WIDE x 1" DEEP REVEAL GALVANIZED REGLET
PAINTED TO MATCH ADJACENT OR LOWER SURFACE
- ⑤ ROOF LINE, SEE ROOF PLAN
- ⑥ MAIN TOWERS (WITH TILE ROOF) - STUCCO
COLOR: RED HOOK; DE 6091
- ⑦ FIELD (OTHER THAN TOWERS) - STUCCO
COLOR: WEATHERED CORAL; DEC 725
- ⑧ ROOF DRAIN IN WALL, OUTLET ABOVE GRADE, SEE 1/A-7.1
- ⑨ MAIN TOWERS (WITH CORNICES) - STUCCO
COLOR: PALOMA TAN; DE 5297
- ⑩ BOTTOM ACCENT, TRIM AND CORNICES - STUCCO
COLOR: DOVER PLAINS; DE 6116
- ⑭ ANODIZED BLACK ALUMINUM STOREFRONT SYSTEM
w/ 1/4" CLEAR GLASS, TEMPERED AS REQUIRED
- ⑰ PAINTED RAFTER TAILS
COLOR: DARK RUBY; DE 6028

NOTE: "DE" DENOTES DUNN EDWARDS PAINT

NO.	REVISION	BY	DATE

HANDLEY ENGINEERING
130 EL CAMINO REAL TUSTIN, CA 92780
SUITE 200 (714) 669-1141



NEW PROFESSIONAL OFFICE FOR:
JAMES HOCH, D.D.S.
32246 CLINTON KEITH ROAD, WILDOMAR, CA 92595

DATE:	11/28/11
JOB NO:	11-23
DRAWN:	WJH
CHECKED:	WJH
SCALE:	1/8"=1'-0"
SHEET	

A-4
OF SHEETS